

**EXAMPLE OF A SAFE PATIENT
AND VISITOR INTERACTION**



Visitors are very important to our patients and their wellbeing. You have a critical role in preventing infections.

We ask that you please follow these guidelines to reduce the spread of germs!

**Please help
us prevent the
spread of germs!**

Please note, this pamphlet provides information only and is to be used as a quick guide.

A care provider will let you know of any necessary precautions outside of this guide

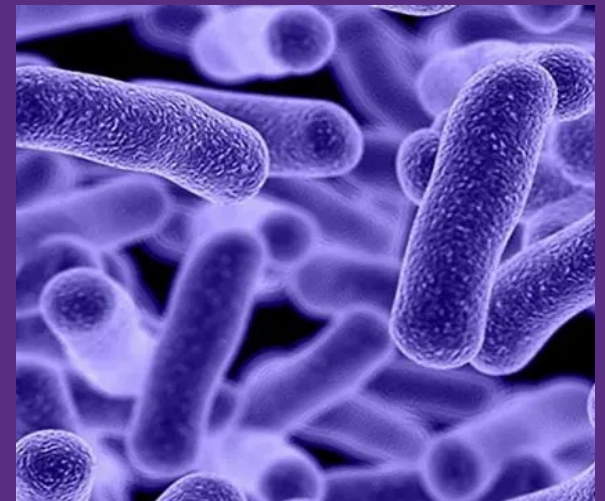
Please review the IPAC or health unit website for more information



**170 COLBORNE ST. WEST
ORILLIA, ONTARIO, L3C 2Z3**

**INFECTION
PREVENTION**

**Guidelines for
Visitors, Families
& Caregivers
Acute Respiratory Illness**



 **Soldiers'**
MEMORIAL HOSPITAL Orillia

PERSONAL PROTECTIVE EQUIPMENT (PPE)

How to Put On Personal Protective Equipment		
1	PERFORM HAND HYGIENE	
2	PUT ON GOWN	
3	PUT ON MASK OR N95 RESPIRATOR	
4	PUT ON EYE PROTECTION	
5	PUT ON GLOVES	

How to Remove Personal Protective Equipment		
1	REMOVE GLOVES	
2	REMOVE GOWN	
3	PERFORM HAND HYGIENE	
4	REMOVE EYE PROTECTION	
5	REMOVE MASK OR N95 RESPIRATOR	
6	PERFORM HAND HYGIENE	

Please ensure you put on a clean mask after removing PPE

- Do not wear PPE outside patient's room
- Take off PPE as soon as you exit patient's room
- Do not remove or lower your mask or eye protection
- Do not touch underneath the gown, mask or eye protection with a gloved hand
- Eating or drinking is not permitted in patient care areas

HAND HYGIENE

Hand hygiene is one of the most effective ways of preventing the spread of illness. Rub hands for 15 seconds with alcohol-based hand sanitizer or with soap and water before and after leaving the isolation room.

Hand hygiene is also necessary upon entering and exiting the facility.



Please follow these guidelines when visiting your loved ones:

- Do not visit if you have a fever, cough, diarrhea or are feeling unwell
- Make sure to clean your hands before and after visiting your loved one
- Do not sit or put your feet on the hospital beds
- Do not use the patient washroom; we can direct you to the public washrooms
- To avoid contamination, do not touch supplies on the supply carts
- Please leave the building directly after your visit
- Please do not visit any other patients during your visit.

❖ PLEASE KEEP IN MIND THESE GUIDELINES MAY CHANGE DEPENDING ON THE ILLNESS ❖

Thank you for helping keep us all safe!