

Visitors are very important to our patients and their wellbeing. You have a critical role in preventing infections.

We ask that you please follow these guidelines to reduce the spread of germs!

Please do not visit if you have a fever, cough, diarrhea or are feeling unwell.

**Please help
us prevent the
spread of germs!**

Please note, this pamphlet provides information and is only to be used as a quick guide.

Please review the IPAC or health unit website for more information



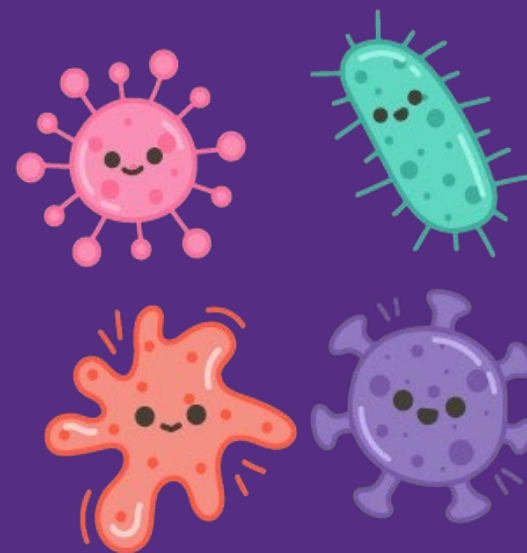
Review the health unit website to keep up on routine and seasonal vaccinations



**170 COLBORNE ST. WEST
ORILLIA, ONTARIO, L3C 2Z3**

INFECTION PREVENTION

A Paediatric Guideline for Visitors, Families & Caregivers



 **Soldiers'**
MEMORIAL HOSPITAL Orillia

Your child is currently on special precautions to help prevent the spread of germs. This means we will be using Personal Protective Equipment (PPE), such as gowns, gloves and masks. To protect your child and others, please follow these important guidelines:

How to Put On Personal Protective Equipment		
1	PERFORM HAND HYGIENE	
2	PUT ON GOWN	
3	PUT ON MASK OR N95 RESPIRATOR	
4	PUT ON EYE PROTECTION	
5	PUT ON GLOVES	

How to Remove Personal Protective Equipment		
1	REMOVE GLOVES	
2	REMOVE GOWN	
3	PERFORM HAND HYGIENE	
4	REMOVE EYE PROTECTION	
5	REMOVE MASK OR N95 RESPIRATOR	
6	PERFORM HAND HYGIENE	

Please ensure to put on a clean mask after removing PPE

- Do not wear PPE outside patient's room
- Take off PPE as soon as you exit patient's room
- Do not remove or lower your mask
- Do not touch underneath the gown, mask or eye protection with a gloved hand
- Eating or drinking is not permitted in patient care areas

HAND HYGIENE

Hand hygiene is one of the most effective ways of preventing the spread of illness. Rub hands for 15 seconds with alcohol-based hand sanitizer or with soap and water:

- When entering/exiting the hospital
- Before entering/leaving your child's room
- After changing diapers or helping your child in the washroom
- Before eating or feeding your child (including tube feeding)

OTHER VISITORS

PPE is required to be worn by visitors who are not performing care. They are also asked to please avoid eating and drinking in the room

If while caring for your child you choose not to wear PPE, please follow these guidelines:

- Ensure you clean your hands before and after visiting the patient, and upon entering and exiting their room
- Wear a mask when outside your child's room
- Wear a mask and clean your hands when going into shared spaces, including shared unit kitchen
- To avoid contamination, do not handle supplies on carts
- Please do not visit any other patients
- Please leave the building directly after your visit

⊠ PLEASE KEEP IN MIND THESE GUIDELINES MAY CHANGE DEPENDING ON THE ILLNESS ⊠

Thank you for helping to keep our patients safe!